

Epic Antarctica

WITH SOUTH GEORGIA
& THE FALKLANDS

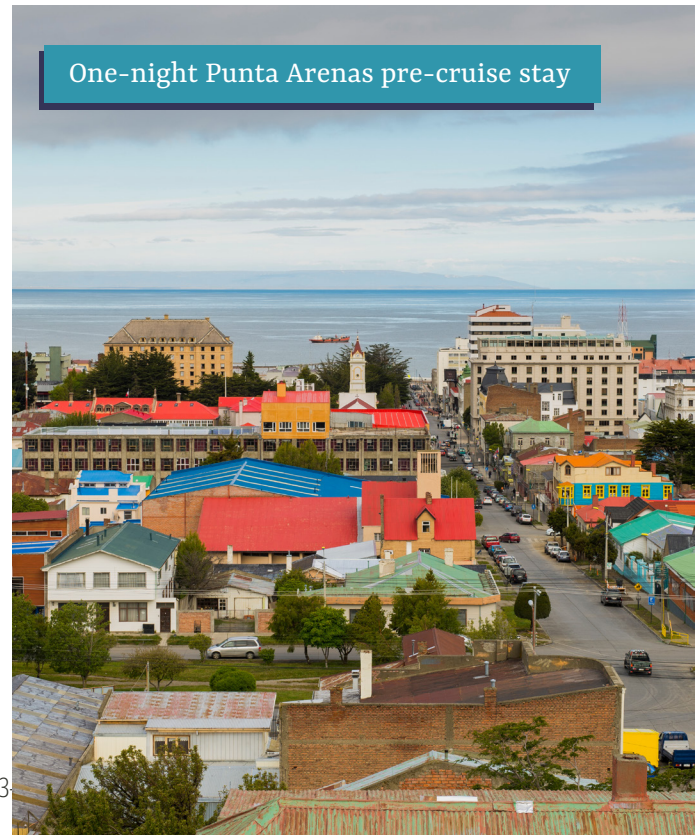
October 22 – November 11, 2027

Aboard the exclusively chartered
96-passenger Magellan Discoverer

Book by
July 1, 2026 and
save US\$1000
per person

21 Days / 20 Nights

WorldwideQuest
Alumni Expeditions





This expedition is presented by the alumni associations of the University of Alberta, the University of Saskatchewan, Western University, McGill University, York University, the University of British Columbia, the Royal Military College of Canada, the University of Guelph, plus the Royal Ontario Museum. All are welcome!

Antarctica remains the world's greatest wilderness realm. On this extraordinary voyage of discovery, we explore three important and contrasting regions straddling the great Southern Ocean that surrounds the White Continent.

In the company of a stellar roster of Canadian university study leaders, Worldwide Quest naturalists, and our onboard team of expedition staff, experience the thrill of early season exploration in the Falkland Islands, South Georgia, and the Antarctic Peninsula.

Prepare to be astonished by the Falkland Islands' wild and rugged landscapes, the fantastic variety of bird species, and the chance to see up to five of the world's penguin species in this remote location.

South Georgia is one of the most dramatic and least visited places on earth. We'll wade ashore on the vast beaches to immerse ourselves in the largest colony of King Penguins in the world, observe gargantuan elephant seals, and retrace the last leg of Shackleton's epic journey. For sheer wildlife extravagance, there's no place like this 'Serengeti of the Southern Ocean.'

Arriving at the Antarctic Peninsula itself, we'll find springtime conditions of pristine and gleaming white. Massive glaciers and icebergs and imposing mountains surround us. We'll visit the Peninsula's highlight locations, home to the greatest collection of Antarctic wildlife and some of the most dramatic scenery in the world.

Our vessel is the new *M/V Magellan Discoverer*, a custom-built ship designed for maximum comfort while maintaining an expeditionary feel. We are hosting a maximum of only 88 participants plus our study team aboard this exclusively chartered expedition. We'll enjoy excellent access to landing sites and Zodiac explorations in very small groups with options for extensive walking and sea kayaking as well.

Little can compare to this small-ship, custom experience for curious and adventurous travellers! Please join us for this magnificent once-in-a-lifetime journey.

Encounter King Penguins and Southern Elephant Seals on South Georgia



Walk in the footsteps of Sir Ernest Shackleton



Discover the thrill of ice: impressive peaks, icebergs and glaciers on the Antarctic Peninsula





**Experience
the cacophony
of seabird
colonies**

**Gaze in awe at
some of the most
dramatic scenery
on the planet**



***M/V Magellan
Discoverer* is the
perfect vessel for
exploring Antarctic
landscapes**

Your Study Leaders



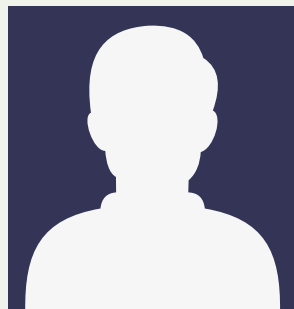
Dr. Philippe Tortell is a Professor of Oceanography at UBC, and Head of the Department of Earth, Ocean and Atmospheric Sciences. He has conducted oceanographic research expeditions around the world including several expeditions to the Ross, Weddell and Amundsen Seas, and extended deployments at Palmer Station on the West Antarctic Peninsula. Among his various works, he edited several popular books, including *Earth 2020: An Insider's Guide to a Rapidly Changing Planet*. Philippe is a graduate of McGill University. This Antarctica departure will be Philippe's third with us!



Dr. Maria (Maite) Maldonado is a Professor in Earth, Ocean and Atmospheric Sciences at the University of British Columbia. Her research explores how bioactive trace metals—particularly iron and copper—influence phytoplankton physiology and ocean productivity. She earned her PhD from McGill University in 1999. Maldonado's work has documented iron limitation of primary productivity in the Arctic Ocean and examined how ocean acidification and thinning sea ice affect metal availability for Arctic phytoplankton. She has participated in international GEOTRACES research cruises and served on its Scientific Steering and Data Management Committees, advancing global collaboration in marine biogeochemistry. This will be Maite's third expedition with us!



Dr. Alison Criscitiello is a world-renowned ice core scientist, mountaineer, and advocate for gender equity. An Assistant Professor and Director of the Canadian Ice Core Lab at the University of Alberta, she earned MIT's first PhD in glaciology. Her research reconstructs climate and contaminant histories from ice cores drilled across Antarctica, Greenland, and the Canadian High Arctic, documenting glaciers at risk from climate change. A co-founder of Girls on Ice Canada, she champions science education for young women. Her work bridges research, exploration, and storytelling to inspire curiosity about the polar world. Alison is a Fellow International of The Explorers Club.



To be announced!

Worldwide Quest Naturalists & Staff



Catherine Jardine is our Cruise Director. Catherine is an avid naturalist and traveller who follows her considerable interests in wildlife worldwide. A superlative communicator of the natural world, Catherine works as staff ornithologist with Birds Canada, based at the organization's National Data Centre in Delta, BC. A graduate of the University of Guelph, She has conducted field projects in remote locations around the world and is the Bander-in-Charge at the Iona Island Bird Observatory. Catherine has been to Antarctica in a leadership and educational capacity over one dozen times, and notably brings expertise in seabirds developed through her field work and previous Antarctic voyages.



Wendi Lacusta is our Concierge in Charge. Hailing from Nova Scotia where she grew up sailing and open ocean swimming, Wendi has lived many years since on Canada's West Coast, where she is retired from a career of teaching, designing public recreation facilities and managing community service teams in West Vancouver. Wendi is an inveterate (and veteran) solo world traveller and since her first retirement, has also undertaken work aboard polar expedition cruise vessels. Wendi travelled with us on our previous two Antarctica adventures.



To be announced!

Detailed Itinerary

Friday, October 22: Meet in Punta Arenas

Arrive in Punta Arenas, Chile where you will be met at the airport and transferred to our group hotel in town. Meet this evening for a briefing with introductions, followed by a chance to get acquainted further during our Welcome Dinner, with much anticipation for the days ahead!

Meals: Welcome Dinner

Overnight: Cabo de Hornos or similar

Saturday, October 23: Embark the M/V Magellan Discoverer, Strait of Magellan

Enjoy some free time this morning to explore in town. At 4:00 PM, we transfer to the port for embarkation. We'll get settled into our cabins, meet vessel staff and receive a safety and hospitality orientation, followed by our first dinner in the vessel's elegant dining area as we begin cruising through the Strait of Magellan towards the Falklands.

Meals: Breakfast, Dinner

Overnight: M/V Magellan Discoverer

Sunday, October 24: At sea towards the Falklands

As we sail to the Falklands, join focused presentations by our study leaders and expedition staff giving us an in-depth understanding and context for the seascapes and landscapes we're exploring. In between our presentations, head onto the decks or balconies to watch various species of albatross, petrels, shearwaters and more.

Meals: Breakfast, Lunch, Dinner

Overnight: M/V Magellan Discoverer



Southern Rockhopper Penguin



Monday, October 25: Saunders Island and Carcass Island

With more penguins than people, the Falkland Islands are one of the best places to observe five species of penguin. Our first stop on Saunders Island is a chance to encounter thousands of Southern Rockhopper Penguins, observe Macaroni penguins in their grassy hillside burrows, and marvel at the beaches dotted with King penguins. In addition to the wonderful Black-browed Albatross we'll expect to see abundant birdlife and we might spot our first Southern Elephant Seals! We'll walk the white sandy beaches of Carcass Island on the lookout for Magellanic and Gentoo penguins and enjoy a Falkland tea experience for a taste of local flavour! This evening, we continue to cruise around the bottom of the archipelago.

Meals: Breakfast, Lunch, Dinner

Overnight: M/V Magellan Discoverer

Tuesday, October 26: Bleaker Island

This morning, we plan to land at Bleaker Island off the southeast coast of East Falkland. Part of this long and narrow island is an organic sheep farm, where the northern half is a National Nature Reserve, home to a large variety of birds including an enormous colony of Imperial shags, and to Gentoo, Magellanic, and Rockhopper penguins. We'll watch for South American Sea Lions hauling out on the rocks. In the afternoon, we will set sail towards our next destination: South Georgia.

Meals: Breakfast, Lunch, Dinner

Overnight: M/V Magellan Discoverer

Wednesday, October 27 – Thursday, October 28: Towards South Georgia, cross the Antarctic Convergence

Enjoy these days crossing the expanse of sea between the Falklands and South Georgia, crossing the Antarctic Convergence and entering the Southern Ocean, traversing an invisible barrier between balmy climes and distinctly cooler weather. The Convergence is a zone of great marine productivity as upwellings create ideal conditions for tiny marine life, in turn supporting vast numbers of more conspicuous wildlife. We'll enjoy a number of in-depth presentations from our study leaders and staff on various aspects of the region, preparing us for the coming days.

Meals: Breakfast, Lunch, Dinner

Overnight: M/V Magellan Discoverer

Friday, October 29: Towards South Georgia, cruising at Elsehul Bay

Continue cruising towards South Georgia, expecting to see land in the afternoon. It is estimated that 30 million birds call South Georgia home—from 7 million penguins to 250,000 albatrosses—and half of the world's entire population of Southern Elephant Seals! We plan for an evening introductory zodiac cruise at Elsehul Bay, one of the most spectacular locations in South Georgia.

We'll observe Black-browed and Grey-headed Albatross, a rookery of Macaroni penguins, and Southern Elephant Seals and Antarctic Fur Seals lining the beach. A striking introduction!

Meals: Breakfast, Lunch, Dinner

Overnight: M/V Magellan Discoverer

Macaroni Penguins



Saturday, October 30: Grytviken and Fortuna Bay / Stromness

This morning we plan to land at Grytviken. Founded in 1904, it was the largest of several whaling stations occupied during the first part of the 20th century when South Georgia was the centre of a major regional whaling industry. Though it no longer has permanent residents, Grytviken is notably home to the final resting place of Sir Ernest Shackleton; we'll raise a toast at his gravesite. In the afternoon, we plan to land at Fortuna Bay, with the option of retracing the last leg of Shackleton's 1916 survival trek to reach Stromness.

Meals: Breakfast, Lunch, Dinner

Overnight: M/V Magellan Discoverer

Sunday, October 31: Salisbury Plain

A wildlife experience of incredible intensity awaits on Salisbury Plain, home to several thousands of King Penguins (one of the three largest colonies on South Georgia) and one of the world's largest breeding areas of the gargantuan Southern Elephant Seal. We'll have a chance to explore and be immersed in this wonderful environment, where you will have a multitude of photographic opportunities. There are more penguins here than the eye can see!

Meals: Breakfast, Lunch, Dinner

Overnight: M/V Magellan Discoverer

St. Andrews Bay on South Georgia



Monday, November 1: St. Andrews Bay and Cooper Bay

The grandness of South Georgia's wildlife experience becomes even more apparent today, as we plan to land at St. Andrews Bay, home to the largest King Penguin colony in the world, with tens of thousands of these gorgeous penguins here at one time! This afternoon, we continue cruising toward the southeast tip of South Georgia. Our plan is to enjoy a Zodiac excursion at Cooper Bay, home to one of the most accessible colonies of the flamboyant and comical Macaroni Penguin. This species is the most abundant of the world's roughly 20 penguin species.

Later, we set sail towards Antarctica!

Meals: Breakfast, Lunch, Dinner

Overnight: M/V Magellan Discoverer

Tuesday, November 2 – Wednesday, November 3: Cruising towards the Antarctic Peninsula

Enjoy two full days at sea with expert presentations, and many opportunities to enjoy the views and seabirds. Keep an eye out for icebergs of all shapes and sizes, promising unique photographic opportunities at every angle. Perhaps take some time to visit the bright onboard library or spacious lounge and take in the views through the large windows.

Meals: Breakfast, Lunch, Dinner

Overnight: M/V Magellan Discoverer

Thursday, November 4: Cruising, Elephant Island

Continue cruising with Elephant Island as our goal. This island lies just above the Antarctic Peninsula and makes a fitting introduction with its snow-capped peaks, rugged shorelines, and glaciers! With a contour in the shape of an elephant's head, Elephant Island is home to a colony of the gorgeous Chinstrap Penguins, which may just be returning to re-occupy the site for the breeding season. Enjoy a zodiac cruise if conditions allow and take in the grand landscape before us.

Meals: Breakfast, Lunch, Dinner

Overnight: M/V Magellan Discoverer Black-browed Albatross



© Justin Peter

Friday, November 5 – Monday, November 8: Antarctic Peninsula

We spend four full days cruising along the Antarctic Peninsula and among the South Shetland Islands, penetrating the Antarctic Sound and Gerlache Strait as conditions allow, with various landings and Zodiac rides at signature sites. Decisions on excursions each day will be made based on current weather and sea conditions with your safety in mind. Some of the sites we may visit include: Gourdin Island, Brown Bluff, Half Moon Island, Deception Island, Wilhelmina Bay, the Lemaire Channel, Cuverville Island, and the Melchior Islands. All offer spectacular scenery, variously including opportunities to observe glaciers, geology, marine mammals and bird life. In between excursions, you will have plenty of opportunity to enjoy the scenery as we cruise along.

Meals: Breakfast, Lunch, Dinner

Overnight: M/V Magellan Discoverer

Tuesday, November 9 – Wednesday, November 10: Cruising North to South America

We'll head north and set course for Ushuaia, the world's southernmost city. We'll have good time to contemplate the enormity of Antarctica, continue to enjoy presentations, and admire the magnificent seascapes. Eventually we will sail past Cape Horn, moving east, north, then head west into the Beagle Channel, enjoying our final dinner aboard and a chance to reminisce.

Meals: Breakfast, Lunch, Dinner

Overnight: M/V Magellan Discoverer

Thursday, November 11: Disembark at Ushuaia

This morning after breakfast and around 9 AM, we disembark and make our way to the airport for our homebound flights. You may wish to spend an extra day or two in Ushuaia to relax and explore the Tierra del Fuego region or elsewhere.

Meals: Breakfast

Please contact us for more information and to receive a detailed itinerary on one of our fabulous extensions.



Walking on South Georgia

Expedition Details

Cost (per person):

Grand Veranda Suite: US\$32,750

(409 ft² / 38 m²; 2 Twin beds or 1 King-size bed)

Deluxe Veranda Cabin: US\$26,750

(280 ft² / 26 m²; 2 Twin beds or 1 King-size bed)

Guaranteed Single Accommodations:

Single accommodations are limited and available only in the Deluxe Veranda Cabin category. If you wish *guaranteed* single accommodation, the single supplement for this trip is approximately 50%. This will be collected at 4 months prior to departure. If you are travelling alone and willing to share, we will try our best to match you with an appropriate roommate.

Group Size:

Maximum 88 guests

Payment Details:

US\$5000 per person is required to reserve a space on this expedition. A second deposit of US\$7000 is required nine months prior to departure. Final payment is due four months prior to departure.

What's Included:

- One pre-cruise hotel night in Punta Arenas, based on double occupancy
- Accommodation in selected cabin, based on double occupancy
- Welcome dinner ashore
- All meals onboard: breakfast, lunch, and dinner
- House wine and beer with dinner
- Happy hour beverage at cocktail hour recap sessions
- Coffee, tea, chocolate, cappuccino, water, and snacks on board ship
- Complimentary Expedition jacket to keep
- Complimentary use of thermal rubber boots
- All group Zodiac excursions and landings
- Educational presentations and tutorials by study leaders and expedition staff
- Video journal of the voyage
- Port dues and taxes
- Special access permits and fees
- Services of on-board expedition staff
- Transfer from ship to Ushuaia airport on disembarkation day

Not Included:

- Airfare from your home to Punta Arenas and from Ushuaia to your home
- Gratuities for services aboard the *M/V Magellan Discoverer*
- Items of a personal nature: laundry, phone calls, WiFi etc.
- Alcoholic beverages (besides those indicated in "Included" above)
- Sea Kayaking (US\$995; please enquire at the time of booking)
- Excess baggage charges
- Fuel surcharges, if applicable
- Travel insurance
- Any required visas for Chile, Argentina and/or UK (not currently required for Canadian passport-holders)
- Additional arrangements required due to any emergency



Sea Kayaking

Additional Cost: US\$995

Note: The program takes a maximum of 10 participants. Please reserve your spot upon booking.

There is no better way to enjoy Antarctica than gliding through its waters on a sea kayak. With icebergs surrounding you, and wildlife playing inquisitively around your vessel, you'll see the White Continent like you've never imagined. The Sea Kayaking program is a small-group activity led by a Kayak Master and supported by a safety Zodiac. To take part in the program, participants must have previous kayaking experience, and must be able to swim. Each excursion lasts about 90 minutes, leaving you plenty of time to explore on land as well. Please note that sea kayaking is offered as a full program of excursions delivered to the same group of participants. Equipment is provided.

Our Vessel, the *M/V Magellan Discoverer*

PASSENGERS: 96 MAX. STAFF & CREW: 67 LENGTH: 94M BREADTH: 17.2M DRAFT: 4.5 M
ICE CLASS: LR PC6 PROPULSION: HYBRID-ELECTRIC DIESEL ENGINES, 2 X 1,800 KW CRUISING SPEED: 14 KN IN OPEN WATER



With a maximum of 96 passengers and 67 crew, the *M/V Magellan Discoverer* is a new and modern vessel custom-built for Antarctic expedition cruising up to the latest Polar Code specifications. All cabins feature private balconies with seating. Most cabins have two twin beds that can be configured as one queen-size bed. All cabins feature a wardrobe, individually controlled heating system, a sitting area, and a private bathroom with a shower and heated floors.



Bar & Lounge



Library



Sauna



Dining Room



Gym



Multipurpose Room/Lab



Reception Area



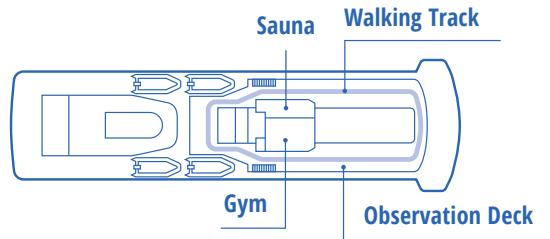
**Grand
Veranda
Suite**



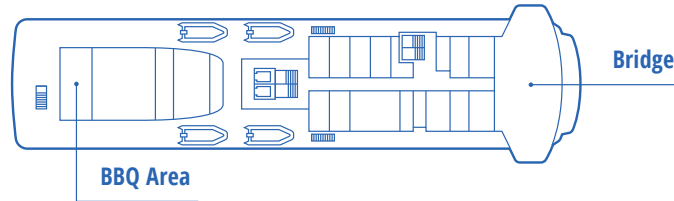
**Deluxe
Veranda
Cabin**



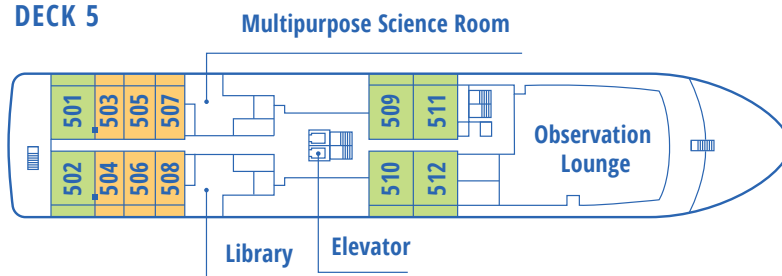
DECK 7



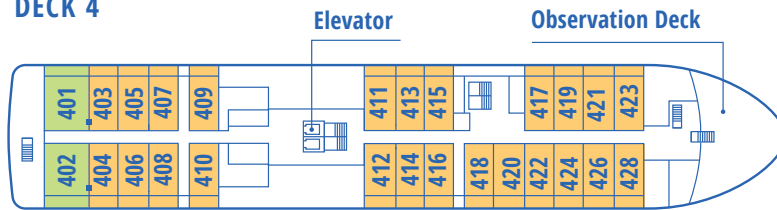
DECK 6



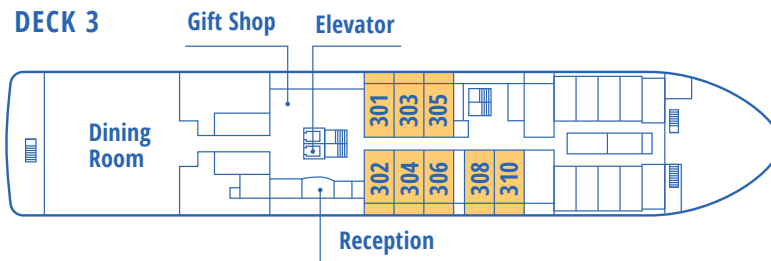
DECK 5



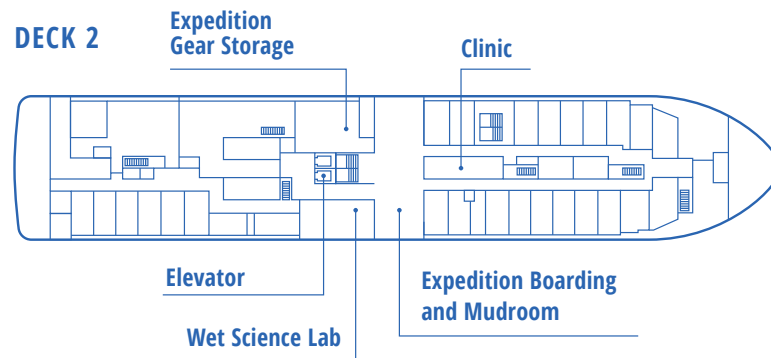
DECK 4



DECK 3



DECK 2



CABINS

● Grand Veranda Suite

● Deluxe Veranda Cabin

What to Expect



Joining Instructions

Our trip will begin with a briefing and Welcome Dinner hosted by Worldwide Quest in Punta Arenas at 6:00 PM on October 22. Please ensure you are at our group hotel no later than 4:00 PM so that you do not miss this event. Our tour ends upon arrival at Ushuaia November 11 mid-morning. You will be transferred to Ushuaia Airport directly from the vessel. Your departure flight should be no earlier than 2:00 PM, although please await final instructions before making any arrangements. We can also assist with making additional hotel arrangements.



Travel Documents

You will need a valid passport with you throughout the journey. It is important that your passport is valid for at least six months after the expected finish date of your voyage.



Level of Activity: Moderate

This voyage is suitable for any person who is in reasonable health and who has the capability of getting in and out of Zodiacs with close assistance from competent sailors and expedition crew members. Walking on rocky shores can be challenging at times; however, such walks and hikes are organized into groups, each with different levels of ability. Walks may generally take 1 – 2 hours over mostly even terrain. There may be some more optional walks that are more challenging and require greater exertion.



Weather

Daytime temperatures during our expedition could range from -10°C to 10°C. Antarctic weather can change rapidly and dramatically; within minutes fine sunny conditions may shift to grey skies, windy conditions, and snowfall. On the Antarctic Peninsula, temperatures typically hover around 2 – 3°C and on sunny, calm days, you can experience temperatures of 5 – 6°C. At night, or if the weather turns, temperatures can go down to several degrees below 0°C. Conditions are milder on the Falklands and in South Georgia.

A full pre-departure packet with suggested gear will be sent to you before departure so that you will be well-prepared.



Additional Info

Extend your Stay

We will be offering a variety of pre-trip and post-trip extensions. Pre-trip extensions will include one to the beautiful and haunting Atacama Desert and one to Santiago, Viña del Mar & Valparaíso (for the oenophiles). Post-trip extensions will include Tierra del Fuego, Patagonia, and Iguazu Falls. Please let us know and we'll provide you with the details. We can also suggest other options based on your time available, budget and interests.

Terms and Conditions

For additional information about our terms and conditions, please refer to your booking form, the current catalogue or our website. All participants booking with Worldwide Quest are covered by the terms of the Ontario Travel Industry Act (Worldwide Quest International, Ontario - License # 2667946).

Cancellation Policy

All payments are non-refundable. Initial deposits for cruises are non-refundable and non-transferable. If you cancel within 90 days prior to trip departure, all associated trip costs are non-refundable. The tour price is quoted as a package. No partial refunds or credits will be given for services not used. In the event of a cancellation, you must notify Worldwide Quest immediately and in writing.

Travel Insurance

Please note that all payments are non-refundable. We urge you to ensure that you have adequate cancellation and medical insurance in place, should an unexpected event cause you to cancel or interrupt your trip or should the tour not be operable per our terms and conditions. We will offer you Manulife insurance coverage. Should you decline this coverage, you must sign a waiver and provide details of your own medical coverage. Medical insurance including emergency medical evacuation coverage is mandatory on all our tours.

Medical Information

Our ship operator will require you to complete a medical questionnaire. This will be made available four months prior to departure. Participants over the age of 65 will require a doctor's certificate attesting to their fitness for this voyage.

How to Book

Please contact the Worldwide Quest office for more information. You may secure your booking by phone or using the BOOK NOW button below.

1-800-387-1483 | 416-633-5666 | travel@worldwidequest.com

BOOK NOW



TICO#: 2667946

PRESENTED IN CONJUNCTION WITH

